

VALOR

HOSPITALITY PARTNERS

Alabama

Birmingham – The Valley Hotel, Curio Collection

Gulf Shores – Lodge at Gulf State Park

Huntsville – 106 Jefferson, Curio Collection

Orange Beach – Hotel Indigo

Tuscaloosa – Embassy Suites

Colorado

Grand Junction – Holiday Inn

Winter Park – Holiday Inn Express

Florida

Cape Canaveral – Holiday Inn Express

St. Augustine – DoubleTree by Hilton

Washington DC

Washington, D.C. – Kimpton Banneker

New Jersey

Basking Ridge – Delta Hotel

Warren - Somerset Hills Hotel, Tapestry Collection

New York

Suffern - Crowne Plaza

Tennessee

Chattanooga – Cloudland, Curio Collection

Franklin – Harpeth Hotel, Curio Collection

Memphis – Central Station Hotel, Curio Collection

Memphis - Holiday Inn Univ of Memphis

Texas

College Station - Hilton

Wyoming

Casper – Holiday Inn



LEAD SHARE PROGRAM

Bringing
Referrals
Accelerating
Valor's
Opportunities

PROPERTY GUIDE

Valley Hotel Birmingham, Curio

2727 18th Street South | Homewood | [Alabama](#) | 35209

[Website](#) | 205-354-0171



FAST FACTS



Rooms & Suites

- 129 Stunning Rooms
- 9 Luxe Suites
- Spacious Bathrooms
- Hilton Serenity Bed



Dining

- Ironwood Kitchen + Cocktails
- Ironwood Bar + Terrace
- Café + Bistro
- Outdoor Dining
- In-Room Dining



Events

- 6,800 Total sq ft
- 4,100 sq ft Ballroom
- Tech-Forward Boardroom
- On-Site Catering & AV
- Outdoor Event Options



Health & Wellness

- 24-Hour Fitness Center
- Cardio & Weights
- Walking & Jogging Trails
- Healthy Food Options



Hotel Amenities

- Easy On-Site Parking
- Concierge Available
- Digital Key Enabled



Location

- Downtown Homewood AL
- BHM Airport – 8 miles
- Minutes From Birmingham
- 1.8 Miles to UAB
- Near Birmingham Zoo



Seasonality

- **Low** = Nov - Feb
- **Mid** = Jun – Aug, Dec
- **High** = Mar – May, Sep - Oct



Pricing

- **Low** = \$129 - \$169
- **Mid** = \$149 - \$199
- **High** = \$189 - \$299



VALLEY

HOTEL

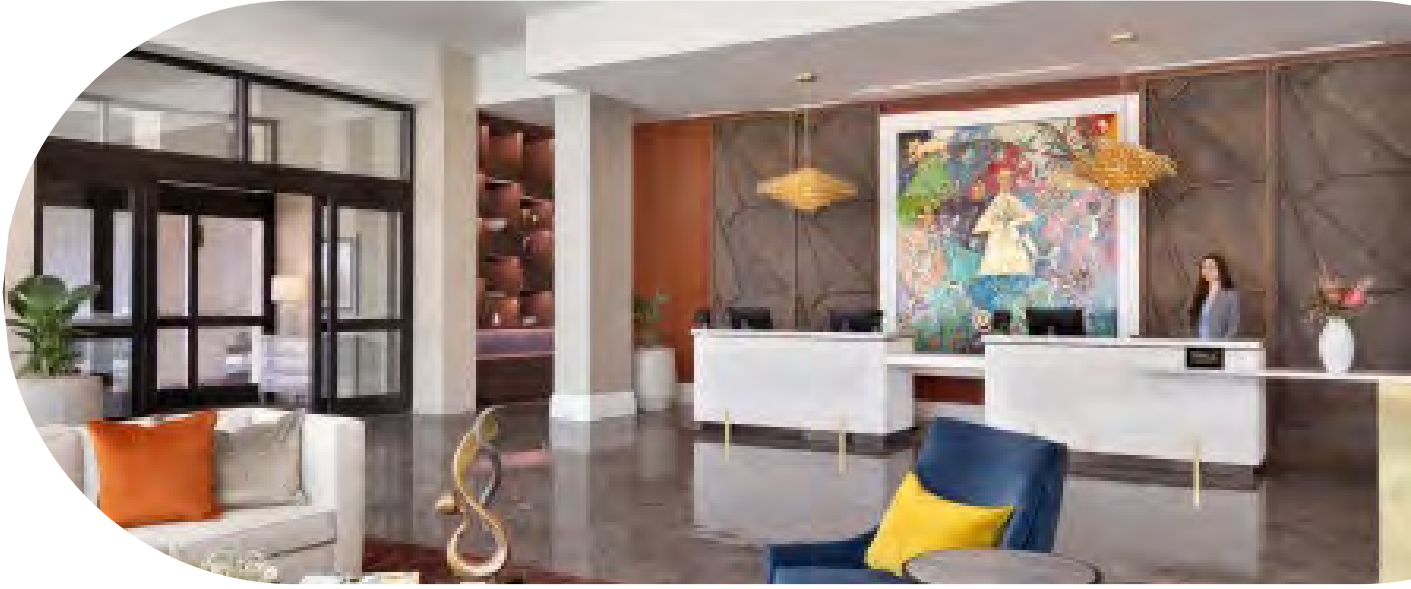
VALOR

HOSPITALITY PARTNERS

Valley Hotel Birmingham, Curio

2727 18th Street South | Homewood | [Alabama](#) | 35209

[Website](#) | 205-354-0171





FAST FACTS



GM: Danny Hiatt | danny.hiatt@hilton.com | 205-368-8907

DOS: Bill Dowling | bdowling@valleyhotelbirmingham.com | 205-907-5214

Regional DOSM: Lauren Masserant | lmasserant@valorhospitality.com | 586-864-6753

Last Renovation: New Build – Opened February 2021

Seasons: High = Mar – May, Sep – Oct | Shoulder = Jun – Aug, Dec | Low = Nov – Feb

Season Rate Ranges: High = \$249 - \$299 | Shoulder = \$169 - \$239 | Low = \$149 - \$179

Closest Airport: Birmingham-Shuttlesworth International Airport (BHM) | **Distance:** 8 miles

Guest Rooms: 129 | **Suites:** 4 | **Pet Friendly:** No

Total Mtg Space: 5,712 sq. ft | **Ballroom:** 4,312 sq. ft | **Breakouts:** 2 | **Outdoor Space:** Yes

Pool: No | **Spa:** No | **Fitness:** Yes | **On-Site Parking:** Yes | **Parking Cost:** Free

Restaurant: Ironwood Kitchen & Cocktails | **Bar:** The Terrace Bar | **Coffee Bar:** Valley Coffee Co.

Unique Aspects:

New – Build Hotel | Spacious Guest Rooms | Located in the Heart of Downtown Homewood

Upscale Restaurant | Outdoor Seating at all Food & Beverage Outlets | On-site Valet Parking



Lodge at Gulf State Park – A Hilton Hotel

21196 E. Beach Blvd | Gulf Shores | [Alabama](#) | 36542

[Website](#) | 215-540-4000



FAST FACTS



Rooms & Suites

- 350 Stunning Rooms
- 20 Suites
- Balconies Available
- Stunning Gulf Views
- Hilton Serenity Bed



Dining

- Perch Restaurant
- Foodcraft Restaurant
- Roasted Oak Coffee Shop
- Dragonfly Poolside Grill
- In-Room Dining



Events

- 40,000 sq ft
- 1,000 Person Capacity
- 14 Breakouts
- Gulf & Beach Views
- Outdoor Event Options



Health & Wellness

- 24-Hour Fitness Center
- Cardio & Weights
- Bicycle Rentals On-Site
- Outdoor Pool & Sun Deck
- Direct Beach Access



Hotel Amenities

- Easy On-Site Parking
- Concierge Available
- Digital Key Enabled
- LEED Platinum Certified
- Free Park Shuttle



Location

- Situated on the Beach
- PNS Airport – 36 miles
- In Gulf State Park
- Immediate Beach Access
- Near Many Gulf Activities



Seasonality

- **Low** = Nov - Feb
- **Mid** = Mar 15 – May, Aug - Oct
- **High** = May 15 - Jul



Pricing

- **Low** = \$99 - \$149
- **Mid** = \$149 - \$249
- **High** = \$189 - \$399



The Lodge Est 1974

AT GULF STATE PARK

A Hilton Hotel

VALOR

HOSPITALITY PARTNERS

Lodge at Gulf State Park – A Hilton Hotel

21196 E. Beach Blvd | Gulf Shores | [Alabama](#) | 36542

[Website](#) | 215-540-4000





FAST FACTS

Lodge at Gulf State Park



GM: Bill Bennett | Bbennett@lodgessp.com | 704-576-7241

DOS: Dan Keyser | Dkeyser@lodgessp.com | 760-464-5017

Regional DOSM: Lauren Masserant | lmasserant@valorhospitality.com | 586-864-6753

Last Renovation: New Build – Opened November 2018

Seasons: High = Mid May - Mid Aug | Shoulder = Mar - Mid May, Mid Aug - Oct | Low = Nov - Feb

Season Rate Ranges: High = \$189-\$300+ | Shoulder = \$149-\$249 | Low = \$99-\$149

Closest Airport: Pensacola (PNS) | **Distance:** 36 miles

Guest Rooms: 350 | **Suites:** 20 | **Pet Friendly:** No

Total Mtg Space: 40,000 sq. ft | **Ballroom:** 12,160 sq. ft | **Breakouts:** 16 | **Outdoor Space:** Yes

Pool: Yes | **Spa:** No | **Fitness:** Yes | **On-Site Parking:** Yes | **Parking Cost:** \$20

Restaurants: Food Craft, Perch, Roasted Oak | **Pool Bar & Grill:** Dragonfly

Unique Aspects:

Gulf Views From Mtg Space | 28 miles of hiking/biking trails | 900 acres fishing lake

Nature Center | Interpretive Center | Near Orange Beach Shopping | Pool Bar & Grill

Leed© Platinum Certified | Beach Front | Beachfront Infinity Pool | Curated Coffee & Wine Bar



The Lodge Est 1974
AT GULF STATE PARK
A Hilton Hotel

106 Jefferson, Curio Collection

106 Jefferson Street | Huntsville | [Alabama](#) | 35801

[Website](#) | 256-288-0128



FAST FACTS



Rooms & Suites

- 115 Spacious Rooms
- 12 Luxe Suites
- Boutique Design
- Spacious Bathrooms



Dining

- Revivalist Restaurant
- Baker & Able Rooftop Bar
- Private Dining Room
- In-Room Dining



Events

- 2,000 Total sq. ft
- 170 Person Capacity
- 2 Breakouts
- Natural Light



Health & Wellness

- 24-Hour Fitness Center
- Cardio & Weights
- Walkable Downtown Location
- Jogging/Biking Paths Nearby



Hotel Amenities

- Easy On-Site Parking
- Concierge Available
- Digital Key Enabled



Location

- Downtown Huntsville
- HSV Airport – 13 miles
- Walkable Dining & Shopping
- Near U of A Huntsville
- UC Space & Rocket Ctr – 5 miles
- Redstone Arsenal – 6 miles



Seasonality

- **Low** = Nov - Feb
- **Mid** = Jun – Aug, Dec
- **High** = Mar – May, Sep - Oct



Pricing

- **Low** = \$159 - \$209
- **Mid** = \$209 - \$239
- **High** = \$239 - \$399



VALOR

HOSPITALITY PARTNERS

106 Jefferson, Curio Collection

106 Jefferson Street | Huntsville | [Alabama](#) | 35801

[Website](#) | 256-288-0128





FAST FACTS

106 Jefferson



1
0
6

GM: Jeremy Sadler | jsadler@106jefferson.com | 205-746-3166

DOSM: Laura Morgan | lmorgan@106jefferson.com | 256-361-0183

Regional DOSM: Jeannene Glenn | jglenn@valorhospitality.com | 918-671-5171

Last Renovation: New Build – Opened June 2021

Seasons: High = Mar – May, Sep – Oct | Shoulder = Jun – Aug, Nov – Dec | Low = Jan – Feb

Season Rate Ranges: High = \$259-\$399 | Shoulder = \$199-\$259 | Low = \$159-\$199

Closest Airport: Huntsville (HSV) | **Distance:** 13 miles

Guest Rooms: 112 | **Suites:** 12 | **Pet Friendly:** No

Total Mtg Space: 2,100 sq. ft | **Ballroom:** 1,600 sq. ft | **Breakouts:** 2 | **Outdoor Space:** Yes

Pool: No | **Spa:** No | **Fitness:** Yes | **On-Site Parking:** Yes | **Parking Cost:** \$20 – Valet / \$4.50 Self

Restaurants: Revivalist | **Rooftop Bar:** Baker + Able

Unique Aspects:

Innovative design | Upscale gift shop | High-tech event space | Located in the heart of Downtown Huntsville | Walking distance to cultural centers, restaurants, eclectic shopping and nightlife | Home to U.S. Space & Rocket Center and NASA's Marshall Space Flight Center

Hotel Indigo Orange Beach

22843 Perdido Bch Blvd | Orange Beach | [Alabama](#) | 36561

[Website](#) | 251-981-1737



FAST FACTS



Rooms & Suites

- 62 Spacious Rooms
- 37 Suites
- Balconies Available
- Family Suites Available
- Beach & Gulf Views



Dining

- Hunter's Bend Restaurant
- Beach Indigo Bar
- Pool Bar
- In-Room Dining
- Planet Smoothie



Events

- 1,000 sq ft
- 100 Person Capacity
- 2 Breakouts
- Natural Light
- Tech Forward Boardroom



Health & Wellness

- 24-Hour Fitness Center
- Cardio & Weights
- Zero Entry Outdoor Pool
- Heated Indoor Pool
- Jogging/Biking Paths Nearby



Hotel Amenities

- Walkable to Beaches
- Free On-Site Parking
- Business Center
- Free WiFi
- Free Beach Shuttle



Location

- Prime Beach Access
- PNS Airport – 35 miles
- Near Gulf State Park
- Near Gulf Coast Zoo
- Near Tanger Outlets



Seasonality

- **Low** = Oct 15 - Feb
- **Mid** = Mar, May, Aug – Oct 14
- **High** = May 15 – Aug 15



Pricing

- **Low** = \$79 - \$149
- **Mid** = \$109 - \$299
- **High** = \$189 - \$449

HOTEL
INDIGO[®]
ORANGE BEACH - GULF

VALOR

HOSPITALITY PARTNERS

Hotel Indigo Orange Beach

22843 Perdido Bch Blvd | Orange Beach | [Alabama](#) | 36561
[Website](#) | 251-981-1737





FAST FACTS

Hotel Indigo Orange Beach



HOTEL
INDIGO[®]

ORANGE BEACH - GULF

GM: Lisa Grotefend | Lisa@beachindigo.com | 251-975-2600

DOS: Cori Worcester | Cori@beachindigo.com | 251-978-1737

Regional DOSM: Lauren Masserant | lmasserant@valorhospitality.com | 586-864-6753

Seasons: High = Mid May – Mid Aug | Shoulder = Mar, May, Aug-Oct | Low = Mid Oct - Feb

Season Rate Ranges: High = \$189 - \$449 | Shoulder = \$109 - \$299 | Low = \$79 - \$159

Last Renovation: Opened June 2017

Closest Airport: Pensacola (PNS) | **Distance:** 35 miles

Guest Rooms: 62 | **Suites:** 37 | **Pet Friendly:** Yes

Total Mtg Space: 966 sq. ft | **Ballroom:** 714 sq. ft | **Breakouts:** 1

Pool: Yes | **Spa:** No | **Fitness:** Yes | **On-Site Parking:** Yes | **Parking Cost:** Free

Restaurants: Hunter's Bend | **Bar:** Beach Indigo Bar

Unique Aspects:

Large Rooms | Abundance of Suites | Across from Beach | Minutes from Gulf State Park

Hiking & Biking Trails at Doorstep | Great Coffee Shop/Restaurant | Family Suites Available

Heated Indoor Pool | Zero Entry Outdoor Pool & Hot Tub with Fire Pit

Embassy Suites Tuscaloosa

2410 University Blvd | Tuscaloosa | [Alabama](#) | 35401

[Website](#) | 205-561-2500



FAST FACTS



Rooms & Suites

- 154 Spacious Suites
- Digital Key Available
- Two-Room Suites
- Ready for Business
- Mini Fridge All Suites



Dining

- Side by Side Restaurant
- Free Hot Breakfast
- In-Room Dining
- Open Kitchen Concept
- Outdoor Dining



Events

- 5,600 sq ft
- 5,200 sq ft Ballroom
- 550 Person Capacity
- 6 Breakouts
- Natural Light Available



Health & Wellness

- 24-Hour Fitness Center
- Cardio & Weights
- Indoor Swimming Pool
- Healthy Food Options
- Jogging Paths Nearby



Hotel Amenities

- Free Evening Reception
- Free On-Site Parking
- Business Center
- Concierge Available
- Digital Key Ready



Location

- Prime Downtown Location
- BHM Airport – 62 miles
- Near Univ of Alabama
- Walk to Shopping & Dining
- ½ Mile to Amphitheatre



Seasonality

- **Low** = Nov – Dec
- **Mid** = Jan & Jun
- **High** = Feb – May, Jul - Oct



Pricing

- **Low** = \$139 - \$209
- **Mid** = \$149 - \$299
- **High** = \$169 - \$899



**EMBASSY
SUITES**

by HILTON™

Tuscaloosa

VALOR

HOSPITALITY PARTNERS

Embassy Suites Tuscaloosa

2410 University Blvd | Tuscaloosa | [Alabama](#) | 35401

[Website](#) | 205-561-2500





FAST FACTS

Embassy Suites Tuscaloosa



GM: Dee Richardson | dee.richardson2@hilton.com | 509-868-4234

DOS: Iris White | iwhite@Valorhospitality.com | 731-803-3673

Regional DOSM: Lauren Masserant | lmasserant@valorhospitality.com | 586-864-6753

Last Renovation: 2015

Seasons: High = Feb-May, Jul-Oct | Shoulder = Jan & Jun | Low = Dec

Season Rate Ranges: High = \$174 - \$899 | Shoulder = \$154 - \$299 | Low = \$149 - \$209

Closest Airport: Birmingham (BHM) | **Distance:** 62 miles



**EMBASSY
SUITES**

by HILTON™

Tuscaloosa

Guest Rooms: 154 | **Suites:** 154 | **Pet Friendly:** No

Total Mtg Space: 7,000 sq. ft | **Ballroom:** 5,300 sq. ft | **Breakouts:** 2

Pool: Yes | **Spa:** No | **Fitness:** Yes | **On-Site Parking:** Yes | **Parking Cost:** Free

Restaurants: The Side by Side | **Bar:** The Side by Side

Unique Aspects:

Near University of Alabama | Free Cooked-to-Order Breakfast | Free Evening Reception

Downtown Location Walkable to Over 30 Restaurants & Venues | ½ Mile from Amphitheater

All-Suite Property

Holiday Inn Grand Junction - Airport

2751 Crossroads Blvd | Grand Junction | [Colorado](#) | 81506

[Website](#) | 970-628-4346



FAST FACTS



Rooms & Suites

- 119 Spacious Rooms
- 22 One-Bedroom Suites
- 6 Junior Suites
- 57 Double Queen Rooms
- Microwave & Fridge in All Guest Rooms



Dining

- Grand Valley Grill
- Breakfast & Dinner
- Cocktail Lounge
- In-Room Dining Available
- Kids 12 & Under Eat Free



Events

- 1,800 Total sq ft
- 120 Person Capacity
- 12-Person Boardroom
- Free Event WiFi



Health & Wellness

- 24-Hour Fitness Center
- Cardio & Weights
- Healthy Food Options
- Heated Indoor Pool
- Whirlpool



Hotel Amenities

- Free WiFi
- Free On-Site Parking
- Keurig Coffee/Tea Maker
- Free Airport/Local Shuttle
- Business Center



Location

- Adjacent to G.J Airport
- Near Colorado Mesa University
- Near St. Mary's Hospital
- Near Colorado Wine Country
- Near Grand Junction Avalon Theatre



Seasonality

- **Low** = Oct - Feb
- **Mid** = Mar - Apr
- **High** = May - Sep



Pricing

- **Low** = \$89 - \$129
- **Mid** = \$95 - \$139
- **High** = \$109 - \$199


AN IHG® HOTEL

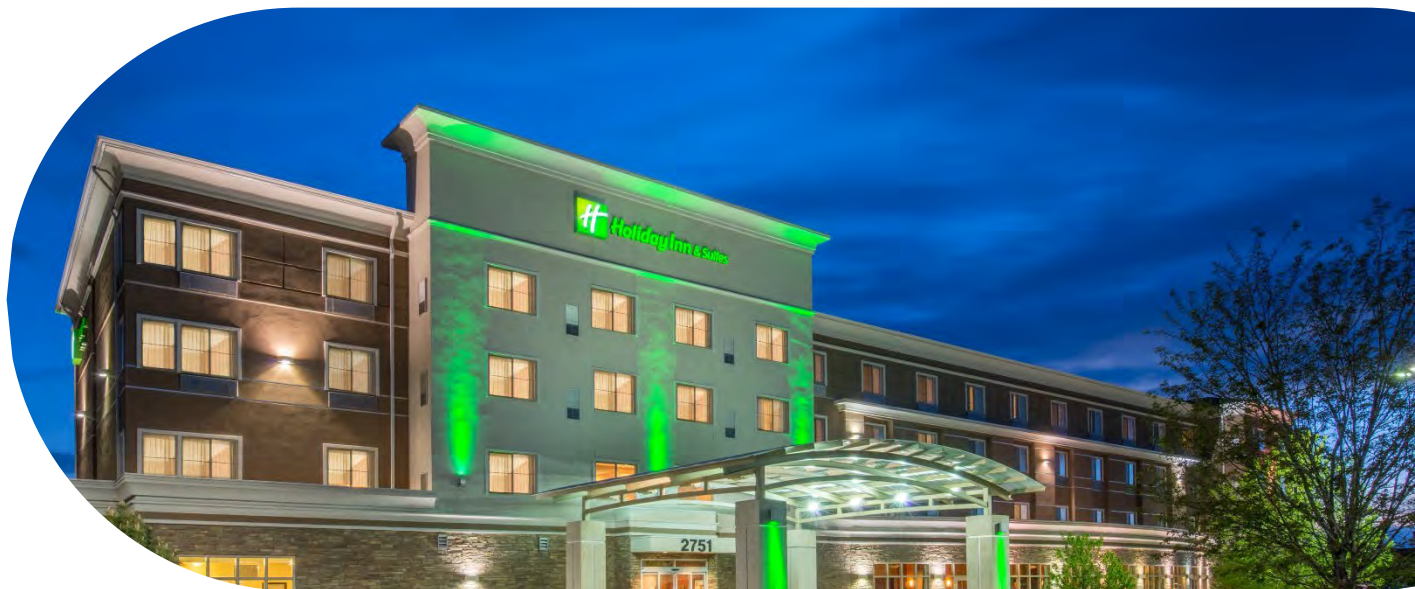
VALOR

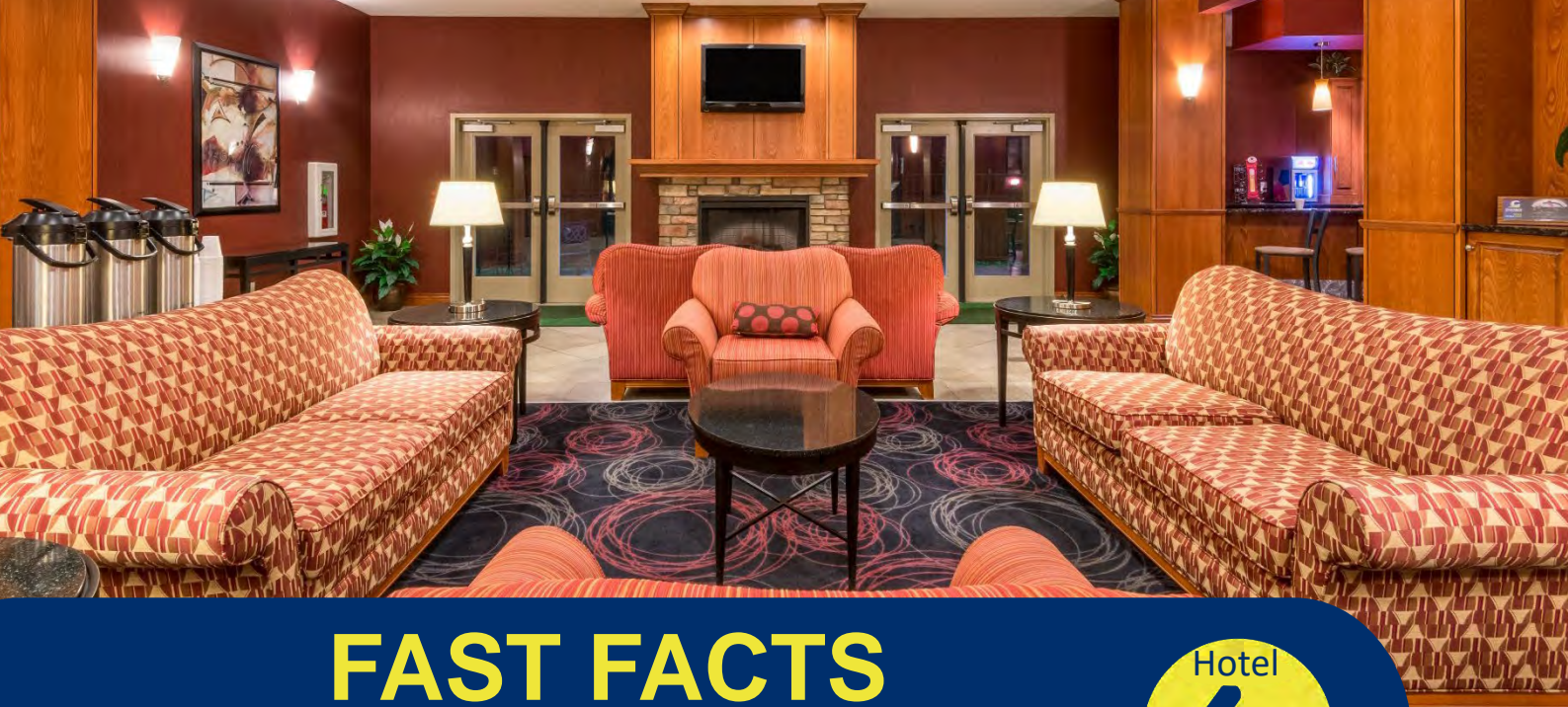
HOSPITALITY PARTNERS

Holiday Inn Grand Junction - Airport

2751 Crossroads Blvd | Grand Junction | [Colorado](#) | 81506

[Website](#) | 970-628-4346





FAST FACTS

Holiday Inn Grand Junction



GM: Chelsea Vialpando | cvialpando@holicayinngrandjunction.com | 970-628-4346

Sales Manager: Kaitlyn Hibberd | sales@holidayinngrandjunction.com | 970-628-4346

Regional DOSM: Jeannene Glenn | jglenn@valorhospitality.com | 918-671-5171

Last Renovation: N/A

Seasons: High = Apr-Oct | Shoulder = Mar | Low = Nov-Feb

Season Rate Ranges: High = \$125 - \$250 | Shoulder = \$109 - \$129 | Low = \$89 - \$109

Closest Airport: Grand Junction Regional (GJT) | **Distance:** 1 mile



Guest Rooms: 119 | **Suites:** 28 | **Pet Friendly:** Yes

Total Mtg Space: 2,000 sq. ft | **Ballroom:** 1,474 sq. ft | **Breakouts:** 3

Pool: Yes | **Spa:** Yes | **Fitness:** Yes | **On-Site Parking:** Yes | **Parking Cost:** Free

Restaurants: Grand Valley Grill | **Bar:** Grand Valley Grill

Unique Aspects:

Near Colorado Mesa University | Cooked-to-Order Breakfast & Dinner | Within miles of biking and hiking trails | Miles to area wineries | 5 miles to Colorado National Monument

Holiday Inn Express – Winter Park

108 Zerex Street | Fraser | [Colorado](#) | 80442

[Website](#) | 970-722-7631



FAST FACTS



Rooms & Suites

- 62 Spacious Guest Rooms
- 8 One-Bedroom Suites
- 12 Balcony Rooms
- Mountain Views Available
- 30 Double Queen Rooms



Dining

- Free Hot Breakfast Buffet
- Kid-Approved Pancake Machine
- Kid Friendly Menu Items
- Free Coffee & Hot Chocolate 24-Hours



Events

- 395 Total sq ft
- 50 Person Capacity
- Free Event WiFi



Health & Wellness

- 24-Hour Fitness Center
- Cardio & Weights
- Healthy Food Options
- Heated Indoor Pool
- Jogging/Biking Paths Nearby



Hotel Amenities

- Microwave & Fridge in Every Guest Room
- Free On-Site Parking
- Whirlpool
- Free WiFi
- Guest Laundry Available



Location

- Prime Fraser Location
- DEN Airport – 90 miles
- Near Winter Park Skiing
- Near Granby Ranch Skiing
- Near Rocky Mountain Nat'l Park



Seasonality

- **Low** = Apr – May, Oct - Nov
- **High** = Jun – Sep, Dec - Mar



Pricing

- **Low** = \$89 - \$129
- **High** = \$119 - \$399



AN IHG® HOTEL

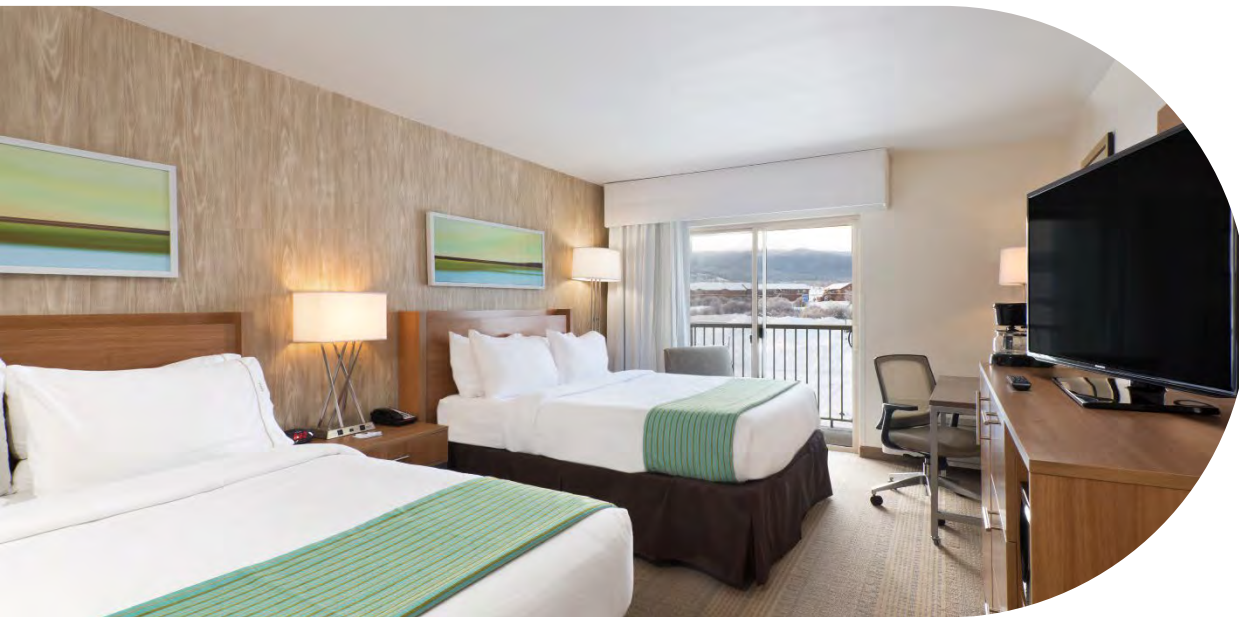
VALOR

HOSPITALITY PARTNERS

Holiday Inn Express – Winter Park

108 Zerex Street | Fraser | [Colorado](#) | 80442

[Website](#) | 970-722-7631





FAST FACTS

Holiday Inn Express Winter Park



GM: Tammie Thompson-Booker | ttbooker@hiexpressfraser.com | 970-629-5056

DOS: N/A

Last Renovation: 2014

Seasons: High = Jan-Mar, Jun-Sep, Dec | Low = Apr-May, Oct

Season Rate Ranges: High = \$175 - \$320 | Low = \$109 - \$209

Closest Airport: Denver (DEN) | **Distance:** 61 miles



AN IHG® HOTEL

Guest Rooms: 62 | **Suites:** 6 | **Pet Friendly:** Yes

Total Mtg Space: 1 small meeting room – 47-person capacity

Pool: Yes | **Hot Tub:** No | **Fitness:** Yes | **On-Site Parking:** Yes | **Parking Cost:** Free

Restaurants: N/A | **Bar:** N/A

Unique Aspects:

Near Winter Park Ski Resort | Free Breakfast | BBQ Area and Fire Pit | Centrally located in the heart of the Rocky Mountains | 24-hour laundry | Colorado's Favorite Playground

Holiday Inn Express Cape Canaveral

1000 Shorewood Dr | Cape Canaveral | [Florida](#) | 32920

[Website](#) | 321-799-4900



FAST FACTS



Rooms & Suites

- 150 Guest Rooms
- 95 Double Queens
- 27 Kings
- 28 Spacious Suites
- 50" Flat Screen TVs
- WiFi Included



Dining

- Complimentary Hot Buffet Breakfast
- Fully Stocked Pantry/Market



Events

- Modern Boardroom
- 16 Person Capacity
- Large Flat Screen TV



Health & Wellness

- Large Fitness Center
- Cardio & Weights
- New Equipment
- Healthy Food Options
- Outdoor Pool
- Kid's Splash Zone
- Outdoor Sitting Area



Hotel Amenities

- Easy On-Site Parking
- 24-Hour Pantry
- Outdoor Pool
- Private Pool Cabanas



Location

- Walk to Cruise Terminal
- Walk to Jetty Park
- View Space Launches



Seasonality

- **Low** = June - September
- **Mid** = April, May, Oct - Dec
- **High** = January - March



Pricing

- **Low** = \$159 - \$225
- **Mid** = \$225 - \$289
- **High** = \$289 - \$399



AN IHG® HOTEL

VALOR

HOSPITALITY PARTNERS

Holiday Inn Express Cape Canaveral

1000 Shorewood Dr | Cape Canaveral | [Florida](#) | 32920

[Website](#) | 321-799-4900





FAST FACTS



Holiday Inn Express Cape Canaveral

GM: John Baribeau | jbarbeau@hiexpresscapecanaveral.com | 321-844-5010

DOS: TBD

Regional DOSM: Lauren Masserant | lmasserant@valorhospitality.com | 586-864-6753

Last Renovation: New Property (2023)

Closest Airport: Orlando International Airport (MCO) | **Distance:** 30 miles

Guest Rooms: 150 | **Suites:** 28 | **Pet Friendly:** No

Total Mtg Space: 357 sq. ft | **Ballroom:** N/A

Pool: Yes | **Spa:** No | **Fitness:** Yes | **On-Site Parking:** Yes | **Parking Cost:** Overnight \$15

Restaurant: Free Hot Breakfast Buffet | **Bar:** N/A

Unique Aspects:

New Hotel | Large Outdoor Pool & Kid's Splash Zone | Steps From Cruise Terminals

Near Space Coast Lunches & Activities | Free Hot Breakfast | Near Cape Canaveral Beaches

DoubleTree by Hilton St. Augustine

116 San Marco Ave | St Augustine | [Florida](#) | 32084

[Website](#) | 904-825-1923



FAST FACTS



Rooms & Suites

- 97 Guest Rooms
- Large Bridal Suite
- 48 King Rooms
- 49 Double Double Rooms
- WiFi Included



Dining

- Oak Room Bar & Lounge
- Restaurant
- Breakfast, Lunch & Dinner



Events

- 2,100 sq ft
- Anastasia Ballroom
- High Ceilings
- Natural Light



Health & Wellness

- 24-Hour Fitness Center
- Cardio & Weights
- Walkable Downtown Area
- Healthy Food Options
- Outdoor Pool



Hotel Amenities

- Bicycle Rentals
- Complimentary WiFi
- EV Charging
- Business Center
- Heated Outdoor Pool
- Fitness Center



Location

- 5 Miles from Alligator Farm
- Easy Walk to Historic Downtown
- 4 Miles from St. Augustine Airport
- 2 Miles from Anastasia Island



Seasonality

- **Low** = June, July & Aug
- **Mid** = October & April
- **High** = November - March



Pricing

- **Low** = \$139 - \$229
- **Mid** = \$149 - \$259
- **High** = \$169 - \$349



DOUBLE TREE
by Hilton™

VALOR

HOSPITALITY PARTNERS

DoubleTree by Hilton St. Augustine

116 San Marco Ave | St Augustine | [Florida](#) | 32084

[Website](#) | 904-825-1923





FAST FACTS

DoubleTree St. Augustine



GM: Gary Gustafson | ggustafson@doubletreesa.com | 904-825-1923

DOS: Lane Shaffer | lane.shaffer@hilton.com | 904-825-1923 ext. 7155

Regional DOSM: Jeannene Glenn | jglenn@valorhospitality.com | 918-671-5171

Last Renovation: 2019 | Planned for 2024

Seasons: High = Nov – Mar | Shoulder = Oct & Apr | Low = Jun - Aug

Season Rate Ranges: High = \$269 - \$349 | Shoulder = \$149 - \$259 | Low = \$139 - \$229

Closest Airport: Jacksonville Int'l Airport | **Distance:** 51 miles



DOUBLETREE
by Hilton™

Guest Rooms: 97 | **Suites:** 1 | **Pet Friendly:** Yes

Total Mtg Space: 2,100 sq. ft | **Ballroom:** Anastasia

Pool: Yes | **Spa:** No | **Fitness:** Yes | **On-Site Parking:** Yes | **Parking Cost:** \$24 per day

Restaurant: Oak Room Restaurant | **Bar:** Oak Room Bar & Lounge

Unique Aspects:

Double-Sided Fireplace in Lobby | Walking Distance to Historic Downtown | Bicycle Rentals

Old Towne Trolley Stop at Hotel | Near Fountain of Youth | Near Mission Nombre de Dios

Kimpton Banneker

1315 16th St NW | Washington | [D.C.](#) | 20036

[Website](#) | 202-234-6399



FAST FACTS



Rooms & Suites

- 144 Guest Rooms
- 33 Spacious Suites
- Oversized Guestrooms
- Newly Renovated
- WiFi Included



Dining

- Le Sel Restaurant
- Lady Bird Rooftop Bar
- In-Room Dining
- Morning Coffee + Tea Service



Events

- 3,800 sq ft flexible space
- 3 Breakouts
- Outdoor Space
- Open-air windows



Health & Wellness

- 24/7 Fitness Center
- Cardio & Weights
- Peloton bikes
- Refreshment Center
- Open-air windows



Hotel Amenities

- Concierge Service
- Umbrellas Available
- Digital Check-in + Checkout
- Loaner PUBLIC bikes
- On-Site / Valet Parking



Location

- DCA Airport – 5 miles
- 16th Street Historic District
- Near National Monuments
- Heart of Washington, D.C.
- Near Univ of Maryland



Seasonality

- **Low** = Jan-Feb, Jul-Sep, Nov-Dec
- **Mid** = Sep-Oct
- **High** = Mar-Jun



Pricing

- **Low** = \$169 - \$699
- **Mid** = \$169 - \$699
- **High** = \$239 - \$699

*
KIMPTON
BANNEKER
WSH HOTEL DC

VALOR

HOSPITALITY PARTNERS

Kimpton Banneker

1315 16th St NW | Washington | [D.C.](#) | 20036

[Website](#) | 202-234-6399





FAST FACTS

Kimpton Banneker



GM: Olivier Servat | oservat@thebanneker.com | 202-234-6399

DOSM: Ruben Rodriguez | rrodriguez@thebanneker.com | 202-234-6394

Regional DOSM: Jeannene Glenn | jglenn@valorhospitality.com | 918-671-5171

Last Renovation: Last Renovation Completion – May 2021

Seasons: High = Mar-Jun | Shoulder = Sep-Oct | Low = Jan-Feb, Jul-Sep, Nov-Dec

Season Rate Ranges: High = \$239 - \$699 | Shoulder = \$169 - \$699 | Low = \$169 - \$699

Closest Airport: Ronald Reagan Washington National (DCA) | **Distance:** 5 miles

★
KIMPTON

BANNEKER

WSH HOTEL DC

Guest Rooms: 144 | **Suites:** 33 | **Pet Friendly:** Yes

Total Mtg Space: 3,800 sq. ft | **Ballroom:** N/A | **Breakouts:** 3 | **Outdoor Space:** Yes

Pool: No | **Spa:** No | **Fitness:** Yes | **On-Site Parking:** Yes | **Parking Cost:** Daily-\$28/Overnight-\$50

Restaurant: Le Sel Restaurant | **Bar:** Lady Bird

Unique Aspects:

Newly Renovated | Year-round Rooftop Bar & Terrace | Iconic views of historic monuments |

Located in the heart of 16th Street Historic District | Fine Art installations throughout hotel |

Open air windows in event spaces | Oversized guest rooms | Classic French Bistro with modern twist

Delta Hotel – Basking Ridge

80 Allen Rd | Basking Ridge | [New Jersey](#) | 07920

[Website](#) | 908-580-1300



FAST FACTS



Rooms & Suites

- 116 Guest Rooms
- 3 Spacious Suites
- Oversized Rooms
- Ready for Business
- WiFi Included



Dining

- Trading Post Restaurant
- Locally Sourced Food
- Breakfast, Lunch & Dinner
- Trading Post Bar & Lounge
- Outdoor Dining



Events

- 3,600 sq ft
- 2,000 sq ft Ballroom
- 150 Person Capacity
- 4 Breakouts
- Outdoor Venue Space



Health & Wellness

- 24-Hour Fitness Center
- Cardio & Weights
- Peloton Bike
- Healthy Food Options
- Jogging Paths



Hotel Amenities

- Outdoor Terrace
- Firepit & Games
- 24-Hour Elite Pantry
- Free Corporate Shuttle
- Free On-Site Parking



Location

- EWR Airport – 25 miles
- LGA Airport – 37 miles
- JFK Airport – 60 miles
- NYC – 36 miles
- Near Pharma Headquarters
- Near USGA Museum
- Near Essex Horse Trials
- Nearby Golfing & Shopping
- Nearby Parks & Recreation



Seasonality

- **Low** = Nov, Dec - Mar
- **Mid** = Jul - Aug
- **High** = Apr – June, Sep - Oct



Pricing

- **Low** = \$89 - \$119
- **Mid** = \$109 - \$149
- **High** = \$139 - \$249



DELTA
HOTELS

MARRIOTT

BASKING RIDGE

VALOR

HOSPITALITY PARTNERS

Delta Hotel – Basking Ridge

80 Allen Rd | Basking Ridge | [New Jersey](#) | 07920

[Website](#) | 908-580-1300





FAST FACTS

Delta Basking Ridge



GM: Marcela Deaza | mdeaza@valorhospitality.com | 908-580-1300

DOS: Ania Krzanowska | akrzanowska@valorhospitality.com | 908-573-2162

Regional DOSM: Lauren Masserant | lmasserant@valorhospitality.com | 586-864-6753

Last Renovation: 2018

Seasons: High = Apr-Jun, Sep-Oct | Shoulder = Jul-Aug | Low = Nov, Dec, Jan-Mar

Season Rate Ranges: High = \$139 - \$250 | Shoulder = \$109 - \$149 | Low = \$89 - \$119

Closest Airport: Newark (EWR) | **Distance:** 25 miles

Guest Rooms: 116 | **Suites:** 3 | **Pet Friendly:** No

Total Mtg Space: 3,589 sq. ft | **Ballroom:** 2,008 sq. ft | **Breakouts:** 2

Pool: No | **Spa:** No | **Fitness:** Yes | **On-Site Parking:** Yes | **Parking Cost:** Free

Restaurant: The Trading Post | **Bar:** The Trading Post Bar

Unique Aspects:

Outdoor Patio with Firepits | Large Backyard Area | Elite Pantry | Very Large Guest Rooms

Designed for Business Traveler | Complimentary Local Area Shuttle

Somerset Hills Hotel – Tapestry Collection

200 Liberty Corner Road | Warren | [New Jersey](#) | 07059

[Website](#) | 908-542-1111



FAST FACTS



Rooms & Suites

- 118 Stunning Rooms
- 2 Suites
- Balconies Available
- Luxe Bathrooms
- Ready for Work Layout



Dining

- TAP and Bitters
- Locally-Sourced Ingredients
- In-Room Dining
- Outdoor Terrace Dining
- Over 20 Craft Beers



Events

- 6,000 sq ft
- 250 Person Capacity
- 5 Breakouts
- Natural Light Available
- Outdoor Event Options



Health & Wellness

- 24-Hour Fitness Center
- Cardio & Weights
- Peloton Bike
- Outdoor Pool & Sun Deck
- Healthy Food Options



Hotel Amenities

- Free On-Site Parking
- Free WiFi
- 30 Million Dollar Renovation
- Concierge Available
- Outdoor Garden Area
- Free Corporate Shuttle



Location

- Historic Warren Township
- EWR Airport – 25 miles
- LGA Airport – 37 miles
- JFK Airport – 60 miles
- NYC – 36 miles
- Near Pharma Headquarters
- Near USGA Museum
- Near Essex Horse Trials
- Nearby Golfing & Shopping
- Nearby Parks & Recreation



Seasonality

- **Low** = Nov - Mar
- **Mid** = Jul - Aug
- **High** = Apr – Jun, Sep - Oct



Pricing

- **Low** = \$99 - \$129
- **Mid** = \$129 - \$169
- **High** = \$159 - \$279



SOMERSET HILLS
HOTEL

VALOR

HOSPITALITY PARTNERS

Somerset Hills Hotel – Tapestry Collection

200 Liberty Corner Road | Warren | [New Jersey](#) | 07059

[Website](#) | 908-542-1111





FAST FACTS

Somerset Hills Hotel



GM: Marcela Deaza | mdeaza@valorhospitality.com | 908-580-1300

DOS: Ania Krzanowska | akrzanowska@valorhospitality.com | 908-573-2162

Regional DOSM: Lauren Masserant | lmasserant@valorhospitality.com | 586-864-6753

Seasons: High = Apr-Jun, Sep-Oct | Shoulder = Jul-Aug | Low = Nov, Dec, Jan-Mar

Season Rate Ranges: High = \$159 - \$275 | Shoulder = \$129 - \$169 | Low = \$99 - \$129

Last Renovation: Underway Currently – Opening Summer 2020

Closest Airport: Newark (EWR) | **Distance:** 25 miles



Guest Rooms: 118 | **Suites:** 3 | **Pet Friendly:** No

Total Mtg Space: 6,000 sq. ft | **Ballroom:** 2,652 sq. ft | **Breakouts:** 2

Pool: Yes | **Spa:** No | **Fitness:** Yes | **On-Site Parking:** Yes | **Parking Cost:** Free

Restaurant: TAP Gastropub | **Bar:** TAP

Unique Aspects:

Close to Major Pharmaceutical Companies | Completely Renovated | 20 Beers on Tap

Large Veranda with Dining & Cocktail Service | Beautiful Outdoor Space/Garden Area

Indoor/Outdoor Bar

Crowne Plaza Suffern

3 Executive Blvd | Suffern | [New York](#) | 10901

[Website](#) | 845-357-4800



FAST FACTS



Rooms & Suites

- 229 Guest Rooms
- 6 Spacious Suites
- Premium Bedding
- Ready for Business
- WiFi Included



Dining

- Flagstone Restaurant
- Locally Sourced Food
- Breakfast, Lunch & Dinner
- Koi Bar & Lounge
- In-Room Dining



Events

- 20,000 sq ft
- 6,400 sq ft Ballroom
- 600 Person Capacity
- 10 Breakouts
- Outdoor Venue Space



Health & Wellness

- Large Fitness Center
- Cardio & Weights
- New Equipment
- Healthy Food Options
- Jogging Paths



Hotel Amenities

- Business Center
- 24-Hour Pantry
- Quiet Zone Rooms
- Waterfall Gardens
- Free On-Site Parking



Location

- LGA Airport – 27 miles
- EWR Airport – 29 miles
- NYC – 35 miles
- Nearby Golfing & Shopping
- Near Fortune 500 Companies



Seasonality

- **Low** = Nov 21 - Feb
- **Mid** = Mar - June
- **High** = July, Sep – Nov 20



Pricing

- **Low** = \$99 - \$129
- **Mid** = \$119 - \$149
- **High** = \$139 - \$179



CROWNE PLAZA[®]

AN **IHG**[®] HOTEL

SUFFERN - MAHWAH

VALOR

HOSPITALITY PARTNERS

Crowne Plaza Suffern

3 Executive Blvd | Suffern | [New York](#) | 10901

[Website](#) | 845-357-4800





FAST FACTS

Crowne Plaza Suffern



GM: Darlene Tedesco | dtedesco@valorhospitality.com | 845-918-1451

DOS: Tracy Marvin | tmarvin@cpsuffernhotel.com | 845-918-1429

Regional DOSM: Lauren Masserant | lmasserant@valorhospitality.com | 586-864-6753

Last Renovation: 2010

Seasons: High = July, Sep – Nov 20 | Low = Nov 21 - June

Season Rate Ranges: High = \$139 - \$179 | Low = \$99 - \$129

Closest Airport: Newark (EWR) | **Distance:** 45 minutes

Guest Rooms: 229 | **Suites:** 6 | **Pet Friendly:** Yes

Total Mtg Space: 20,000 sq. ft | **Ballroom:** 6,400 sq. ft | **Breakouts:** 10 | **Outdoor Space:** Yes

Pool: No | **Spa:** No | **Fitness:** Yes | **On-Site Parking:** Yes | **Parking Cost:** Free

Restaurant: Flagstone | **Bar:** Koi Lounge

Unique Aspects:

Waterfall Gardens | Large Lobby Great for Receptions, Lunches, Dinners for up to 300ppl

Large parking area with 500+ parking spots



CROWNE PLAZA

AN IHG® HOTEL

SUFFERN - MAHWAH

Cloudland at McLeMore Resort Lookout Mountain, Curio by Hilton

243 Cloudland Drive | Rising Fawn | [Georgia](#) | 30738

[Website](#) | 865-868-6200



FAST FACTS



Rooms & Suites

- 224 Spacious Rooms
- 21 Suites
- Free WiFi
- Keurig Coffee Machines
- Breathtaking Mountain Views



Dining

- Four Dining Outlets
 - The Pocket Café
 - The Creag
 - Auld Alliance
 - Croft



Events

- 20,000 sq ft of Indoor Space
- 400 Person Capacity
- 2 Ballrooms
- Outdoor Venues
- Natural light, Stunning Views



Health & Wellness

- Selah Spa
- Peloton Studio
- Infinity Edge Pool
- 3 Golf Courses
- Sunrise Yoga
- Outdoor Activities Nearby



Hotel Amenities

- Bicycle Rentals
- Valet Parking
- Curated Library
- Stargazing Equipment
- Business Center
- Pet Friendly



Location

- Mountaintop Resort in Georgia
- Chattanooga – 30 miles
- Atlanta – 118 miles
- Huntsville – 102 miles
- Nashville – 134 miles
- Birmingham – 147 miles



Seasonality

- **Low** = Nov - Feb
- **Mid** = Mar, Apr
- **High** = May - Oct



Pricing

- **Low** = \$229 - \$279
- **Mid** = \$299 - \$329
- **High** = \$339 - \$499

CLOUDLAND

LOOKOUT MOUNTAIN, CURIO COLLECTION BY HILTON

VALOR

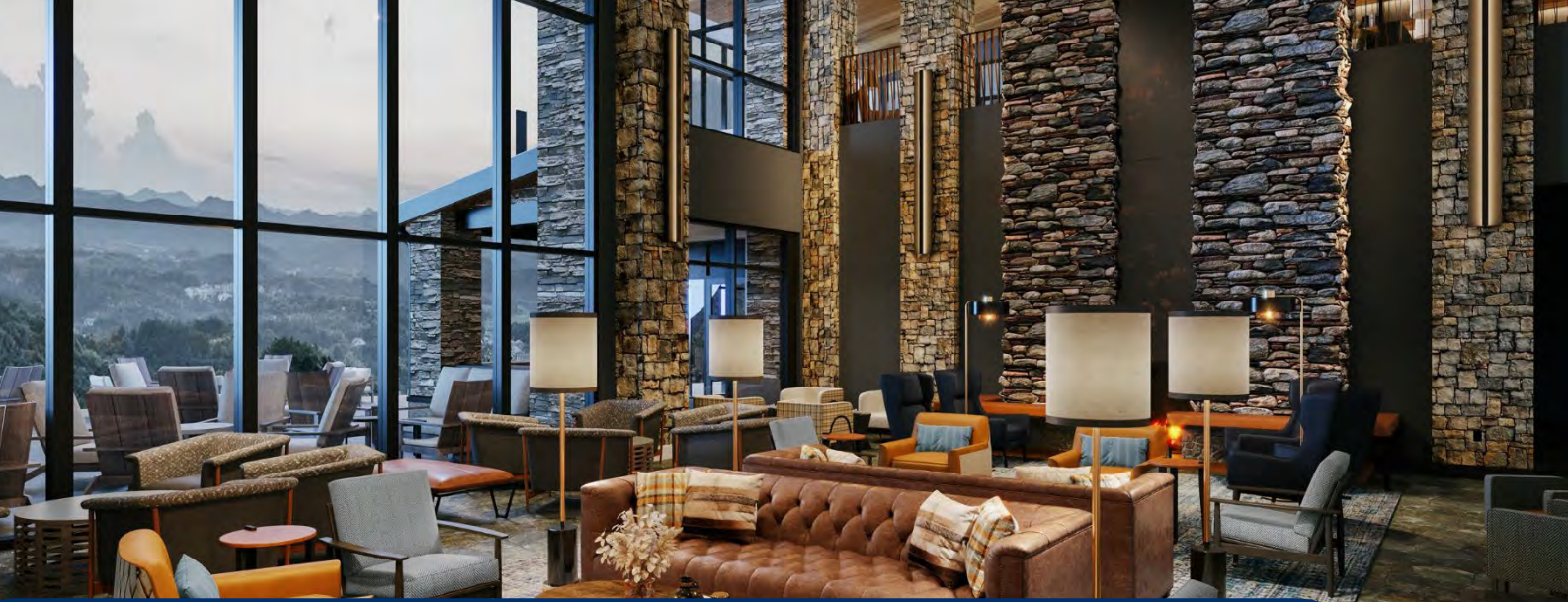
HOSPITALITY PARTNERS

Cloudland at McLeMore Resort Lookout Mountain, Curio by Hilton

243 Cloudland Drive | Rising Fawn | [Georgia](#) | 30738

[Website](#) | 865-868-6200





FAST FACTS

Cloudland at McLemore Resort



CLOUDLAND

GM: Mike Burton | mburton@staycloudland.com | 706-503-1289

DOSM: Chantelle Nikkel | cnikkel@staycloudland.com | 602-370-1611

Regional DOSM: Jeannene Glenn | jglenn@valorhospitality.com | 918-671-5171

Last Renovation: Newly built and Opening March 2024

Seasons: High = May - Oct | Low = Nov - Feb

Season Rate Ranges: High = \$339 - \$499 | Low = \$229 - \$279

2024 Group Introductory Rates: Starting from \$189

Closest Airport: Chattanooga (CHA) | **Distance:** 45 minutes

Guest Rooms: 224 | **Suites:** 21 | **Pet Friendly:** Yes

Total Mtg Space: 20,000 sq. ft indoor | **Largest Ballrooms:** 5,500 sq. ft

Breakouts: 10 | **Outdoor Space:** Yes

Pool: Yes | **Spa:** Yes | **Fitness:** Yes | **Golf:** Yes | **On-Site Parking:** Yes

Restaurant: Flagstone | **Bar:** Koi Lounge

Unique Aspects:

One of a kind mountain top resort | Surrounded by Nature | Events for up to 400 guests

Harpeth Hotel – Curio Collection

130 2nd Avenue N | Franklin | Tennessee | 37064

[Website](#) | 605-206-7510



FAST FACTS



Rooms & Suites

- 119 Spacious Rooms
- 18 Luxurious Suites
- Oversize Bathrooms With Luxe Amenities
- Views of the Courtyard & Historic Franklin
- Rooms with Balconies



Dining

- 1799 Kitchen & Cocktails
- 1799 Bar & Lounge
- McGavock's Euro Cafe
- Private Dining Room
- In-Room Dining
- Outdoor Patio Seating



Events

- Elegant Ballroom With No Obstructions
- 5,000 sq ft
- 185 Person Capacity
- Tech-Forward Boardrooms
- Natural Light



Health & Wellness

- 24-Hour Fitness Center
- Cardio & Free Weights
- Jogging/Biking Paths Nearby
- Healthy Food Options
- Walkable Downtown Area



Hotel Amenities

- Easy On-Site Parking
- Library with Fireplace
- Beautiful Outdoor Courtyard
- Pedego Bike Program
- Whiskey Keep



Location

- Historic Downtown Franklin
- Steps From Main Street
- BNA Airport – 24 miles
- Near Historic Sites
- 25 Minutes to Nashville
- Near Cool Springs Business District



Seasonality

- **Low** = Jan – Feb
- **Mid** = Jun – Aug, Nov - Dec
- **High** = Mar – May, Sep - Oct



Pricing

- **Low** = \$159 - \$209
- **Mid** = \$209 - \$249
- **High** = \$259 - \$399



THE HARPETH

FRANKLIN, TENNESSEE

VALOR

HOSPITALITY PARTNERS

Harpeth Hotel – Curio Collection

130 2nd Avenue N | Franklin | [Tennessee](#) | 37064

[Website](#) | 605-206-7510





FAST FACTS

Harpeth Hotel



GM: Justin Foster | jfoster@harpethhotel.com | 801-710-8381

DOSM: Kimberly Elder | kelder@harpethhotel.com | 615-651-2150

Regional DOSM: Jeannene Glenn | jglenn@valorhospitality.com | 918-671-5171

Seasons: High = Mar-May, Sep-Oct | Shoulder = Jun-Jul, Nov-Dec | Low = Jan-Feb, Aug

Season Rate Ranges: High = \$259 - \$399 | Shoulder = \$209 - \$249 | Low = \$159 - \$209

Last Renovation: New Build – Opening September 2019

Closest Airport: Nashville (BNA) | **Distance:** 24 miles



THE HARPETH
FRANKLIN, TENNESSEE

Guest Rooms: 119 | **Suites:** 18 | **Pet Friendly:** Yes

Total Mtg Space: 5,000 sq. ft | **Ballroom:** 2,580 sq. ft | **Breakouts:** 1

Pool: Yes | **Spa:** Yes | **Fitness:** Yes | **On-Site Parking:** Yes | **Parking Cost:** \$

Restaurant: 1799 (Street Entrance) | **Bar:** 1799 Bar & Lounge | **Café:** McGavock's

Unique Aspects:

Library w/ Fireplace | Only Hotel Downtown Franklin | Whiskey Keep | European Style Café

Walking Distance to Historic Downtown | Beautiful Outdoor Courtyard w/ Fountains

Near Harpeth River | 4 Miles from Cool Springs Business District

Central Station Hotel – Curio Collection

545 South Main Street | Memphis | [Tennessee](#) | 38103

[Website](#) | 901-524-5247



FAST FACTS



Rooms & Suites

- 123 Amazing Rooms
- 9 Suites
- Historic Details
- Views of Memphis Skyline
- Unique Design



Dining

- Bishop Restaurant
- 8 & Sand Bar
- In-Room Dining
- Private Dining Room
- Healthy Options Available



Events

- 10,000 sq ft
- Stunning Historic Ballroom
- 350 Person Capacity
- 2 Boardrooms
- Natural Light



Health & Wellness

- 24-Hour Fitness Center
- Cardio & Weights
- Jogging/Biking Paths Nearby
- Healthy Food Options
- Walkable Neighborhood



Hotel Amenities

- Easy On-Site Parking
- High End Listening Lounge
- On-Site Professional D.J
- Historic Redevelopment
- Amazing Vinyl Record Collection



Location

- South of Main – Art District
- MEM Airport – 12 miles
- Memphis Trolley Walkable
- Near Beale Street
- Near Fed-Ex Forum



Seasonality

- **Low** = Nov - Jan
- **Mid** = Feb - Apr
- **High** = May - Oct



Pricing

- **Low** = \$139 - \$229
- **Mid** = \$169 - \$289
- **High** = \$219 - \$329

CENTRAL STATION HOTEL



VALOR

HOSPITALITY PARTNERS

Central Station Hotel – Curio Collection

545 South Main Street | Memphis | [Tennessee](#) | 38103

[Website](#) | 901-524-5247





FAST FACTS

Central Statio Hotel



GM: Troy Dixon | Tdixon@centralstationmemphis.com | 205-746-3166

DOSM: Amy Gray | agray@centralstationmemphis.com | 901-896-0213

Regional DOSM: Jeannene Glenn | jglenn@valorhospitality.com | 918-671-5171

Seasons: High = May – Oct | Shoulder = Feb - Apr | Low = Nov-Jan

Season Rate Ranges: High = \$269-\$329 | Shoulder = \$219-\$289 | Low = \$139-\$229

Last Renovation: New Build – Opening October 2019

Closest Airport: Memphis (MEM) | **Distance:** 12 miles

Guest Rooms: 123 | **Suites:** 9 | **Pet Friendly:** Yes

Total Mtg Space: 10,000 sq. ft | **Ballroom:** 6,000 sq. ft | **Breakouts:** 4

Pool: No | **Spa:** No | **Fitness:** Yes | **On-Site Parking:** Yes | **Parking Cost:** Free

Restaurant: Bishop (Street Entrance) | **Bar:** 8 & Sand

Unique Aspects:

Former Train Station Completely Renovated | Amazing Music Component | Vinyl Record Collection

DJ Playing Music Throughout Hotel | Local Artwork | Active Train Station (Amtrak)

Listening Room & Listening Lounge Featuring EgglestonWorks Speakers | Speakers in Guest Rooms

Restored Train Arrival/Departure Board in Ballroom | Incredible Natural Light in Ballroom

**CENTRAL
STATION
HOTEL**



Holiday Inn University of Memphis

330 Innovation Drive | Memphis | [Tennessee](#) | 38111

[Website](#) | 901-678-8200



FAST FACTS



Rooms & Suites

- 82 Spacious Suites
- Free WiFi
- Two-Room Suites
- Sofa Sleepers
- Mini Fridge All Suites



Dining

- Medallion Restaurant
- Breakfast, Lunch & Dinner
- 24-Hour Pantry
- Kids Under 11 Eat Free
- Daily Buffet Available



Events

- 37,000 sq ft
- 12,000 sq ft Ballroom
- 1,400 Person Capacity
- 19 Breakouts
- Amphitheatre Seating



Health & Wellness

- 24-Hour Fitness Center
- Cardio & Weights
- Healthy Food Options
- Jogging Paths Nearby



Hotel Amenities

- 24-Hour Pantry
- Free On-Site Parking
- Business Center
- Free Local Shuttle
- Atrium Style Lobby



Location

- Adjacent to Univ of Memphis
- MEM Airport – 12 miles
- Easy Access to Downtown
- Near Graceland
- Beale Street Nearby



Seasonality

- **Low** = Jan – Feb, Dec
- **Mid** = Jul - Aug
- **High** = Mar – Jun, Sep - Oct



Pricing

- **Low** = \$89 - \$119
- **Mid** = \$119 - \$149
- **High** = \$139 - \$159



Holiday Inn
UNIVERSITY OF MEMPHIS
AN ALL-SUITE HOTEL

VALOR

HOSPITALITY PARTNERS

Holiday Inn University of Memphis

330 Innovation Drive | Memphis | [Tennessee](#) | 38111

[Website](#) | 901-678-8200





FAST FACTS

Holiday Inn U of M



GM: Will Green | wgreen@holidayinnuofm.com | 901-678-8200

DOS: Deidra Speight | dspeight@holidayinnuofm.com | 901-678-3635

Regional DOSM: Lauren Masserant | lmasserant@valorhospitality.com | 586-864-6753

Seasons: High = Mar-Jun | Shoulder = Jul-Aug | Low = Dec-Feb

Season Rate Ranges: High = \$139-\$159 | Shoulder = \$119-\$149 | Low = \$89-\$119

Last Renovation: N/A

Closest Airport: Memphis (MEM) | **Distance:** 12 miles

Guest Rooms: 82 | **Suites:** 82 | **Pet Friendly:** Yes

Total Mtg Space: 37,000 sq. ft | **Ballroom:** 12,000 sq. ft | **Breakouts:** 19

Pool: No | **Spa:** No | **Fitness:** Yes | **On-Site Parking:** Yes | **Parking Cost:** Free

Restaurant: Medallion Restaurant | **Bar:** N/A

Unique Aspects:

Adjacent to University of Memphis | City central location | 15 minutes to Downtown Memphis

Three amphitheaters | 14 meeting rooms | University of Memphis Health Center | Two-room suites | Minutes from Beale Street and nightlife



Holiday Inn
UNIVERSITY OF MEMPHIS
AN ALL-SUITE HOTEL

Hilton College Station & Conference Center

801 University Drive | College Station | [Texas](#) | 77840

[Website](#) | 979-693-7500



FAST FACTS



Rooms & Suites

- 301 Spacious Rooms
- 56 Suites
- Poolside Cabana Rooms
- Rooms with Balconies



Dining

- Ignite Bar & Grill
- Reveille Rooftop Bar
- Offshore Pool Bar & Grill
- In-Room Dining
- Coffee Shop



Events

- IACC Certified
- 25,000 Sq Ft of Event Space
- 11,360 Sq Ft Ballroom
- Team Building/Challenge
Cours On-Site
- Tech-Forward Amphitheatre



Health & Wellness

- 24-Hour Fitness Center
- Cardio & Free Weights
- Outdoor Pool
- Team Building/Challenge
Course



Hotel Amenities

- On-Site Parking
- Free WiFi
- Free Local Area Shuttle
- Digital Key
- Outdoor Pool



Location

- 5 Minutes From Texas A&M
- 7 Minutes to Historic Bryan, TX
- College Station Airport – 5 Miles
- Houston Airport – 90 Miles
- Austin Airport – 95 Miles



Seasonality

- **Low** = Jan, Feb, Aug
- **Mid** = Mar, May, Jun, Dec
- **High** = Apr, Jul, Sep, Oct, Nov



Pricing

- **Low** = \$109 - \$159
- **Mid** = \$149 - \$189
- **High** = \$179 - \$259



Hilton
HOTELS & RESORTS

VALOR

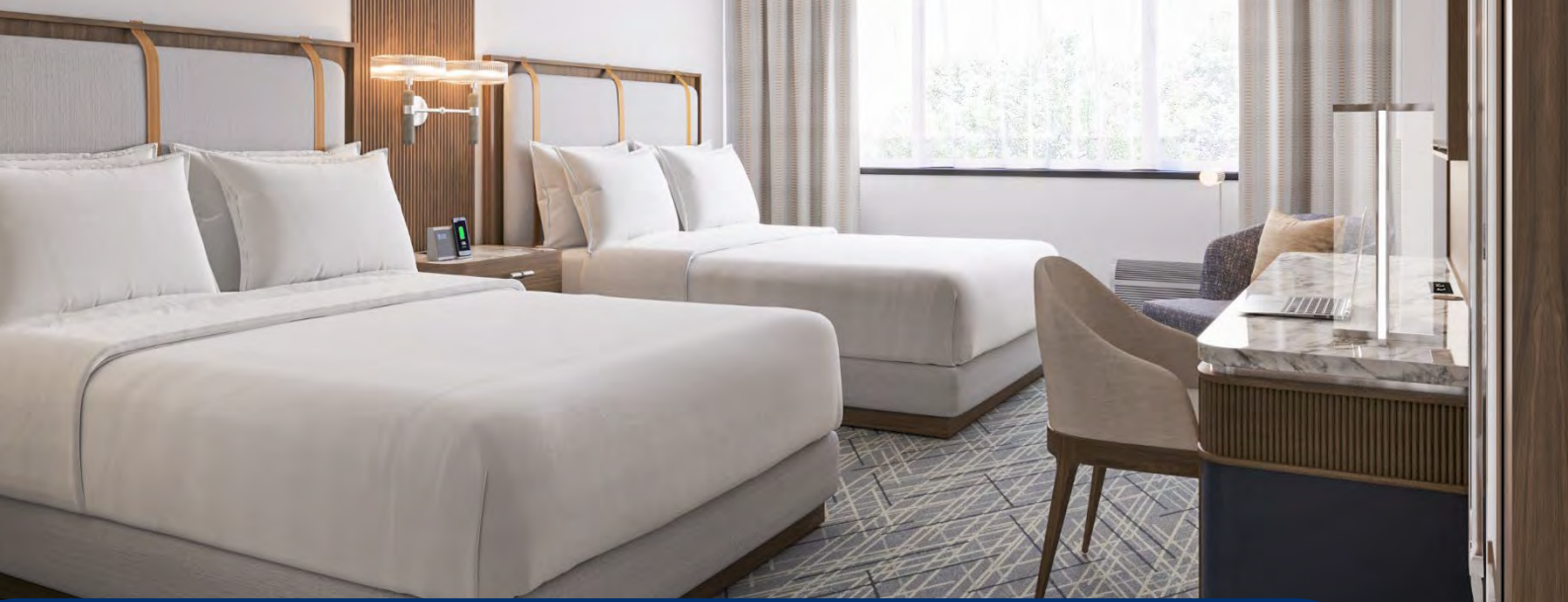
HOSPITALITY PARTNERS

Hilton College Station & Conference Center

801 University Drive | College Station | [Texas](#) | 77840

[Website](#) | 979-693-7500





FAST FACTS

Hilton College Station



GM: Marrissa Selby | marissa.selby@hiltoncs.com | 979-693-7500

DOS: Robert Eubank | Robert.eubank@hiltoncs.com | 979-693-7500

Regional DOSM: Lauren Masserant | lmasserant@valorhospitality.com | 586-864-6753

Revenue Manager: Houston Madson | hmadson@valorhospitality.com | 912-678-9036

Last Renovation: 2024

Closest Airport: College Station | **Distance:** 5 miles



Guest Rooms: 301 | **Suites:** 56 | **Pet Friendly:** Yes

Total Mtg Space: 25,000 sq ft | **Ballroom:** 11,360 sq ft | **Breakouts:** 6

Pool: Yes | **Spa:** No | **Fitness:** Yes | **On-Site Parking:** Yes | **Parking Cost:** Free

Restaurants: Ignite Bar & Grill | **Bar:** Reveille Rooftop Bar

Unique Aspects:

5 Minutes to Texas A&M | On-Site Team Building/Challenge Course | New Renovated

Tech-Forward Amphitheatre | Event Space IACC Certified

Holiday Inn Casper East – Medical Center

721 Granite Peak Drive | Casper | [Wyoming](#) | 82609

[Website](#) | 307-577-5000



FAST FACTS



Rooms & Suites

- 119 Spacious Guest Rooms
- 19 One Bedroom Suites
- Microwave & Refrigerators
- Keurig Coffee/Tea Makers



Dining

- Cole Creek Bar & Grill
- Breakfast & Dinner
- Kids 12 and Under Eat Free
- In-Room Dining



Events

- 1,430 Total sq ft
- 100 Person Capacity
- 12 Person Boardroom
- Free Event WiFi



Health & Wellness

- 24-Hour Fitness Center
- Cardio & Weights
- Healthy Food Options
- Heated Indoor Pool
- Jogging/Biking Paths Nearby



Hotel Amenities

- Free On-Site Parking
- Business Center
- Free WiFi
- Free Local Shuttle
- Whirlpool Spa



Location

- Easy I-25 Access
- KCPR Airport – 15 miles
- Near Wyoming Medical Center
- Near Casper College
- Near McMurry Business Park
- Near Eastridge Mall



Seasonality

- **Low** = Nov - Feb
- **Mid** = Mar - Sep
- **High** = Oct



Pricing

- **Low** = \$89 - \$129
- **Mid** = \$95 - \$139
- **High** = \$109 - \$199



VALOR

HOSPITALITY PARTNERS

Holiday Inn Casper East – Medical Center

721 Granite Peak Drive | Casper | [Wyoming](#) | 82609

[Website](#) | 307-577-5000





FAST FACTS

Holiday Inn Casper



GM: Missy Arnett | marnett@holidayinncasper.com | 307-577-5000

DOS: Shelby Watson | swatson@holidayinncasper.com | 307-577-5000

Regional DOSM: Jeannene Glenn | jglenn@valorhospitality.com | 918-671-5171

Seasons: High = Oct | Shoulder = Mar-Sep | Low = Nov-Feb

Season Rate Ranges: High = \$109-\$199 | Shoulder = \$95-\$139 | Low = \$89-\$129

Last Renovation: N/A

Closest Airport: Casper/Natrona County International (KCPR) | **Distance:** 15 miles



Guest Rooms: 119 | **Suites:** 19 | **Pet Friendly:** Yes

Total Mtg Space: 1,430 sq. ft | **Ballroom:** N/A | **Breakouts:** N/A

Pool: Yes | **Spa:** Yes | **Fitness:** Yes | **On-Site Parking:** Yes | **Parking Cost:** Free

Restaurant: Cole Creek Bar & Grill | **Bar:** Cole Creek Bar & Grill

Unique Aspects:

Located next to Wyoming Medical Center | “Year-Round Mountain Town” | Located near National Historic Trails Center and the Hogadon Basin Ski Area | Heated Indoor Pool and Whirlpool Spa | Complimentary Coffee | Spectacular views of Casper Mountain